

Go-Create Grants Application Details

4th February 2021

James Ruel, Compliance Manager



Agenda



- Overview of ISfB
- What grant support is available
- Eligible activities
- How Go-Create grants work
- Q&A: business@oxfordshirelep.com

Innovation Support for Businesses

- Innovation facilities
 - Eco-business Centre
 - Agile & Prototyping Labs
- Innovation support products
- Go-Create Grants
- OCC, OxLEP, (partners activity ended late 2020 - University of Oxford, Oxford City Council, Cherwell District Council, Oxford University Hospitals Trust)





Go-Create revenue grant pot

Budget	£875,000.00
Committed	£637,856.06
Uncommitted	£237,143.94
Max grant	£50,000 (anticipated)
Grant rate	25% maximum



Go-Create capital grant pot

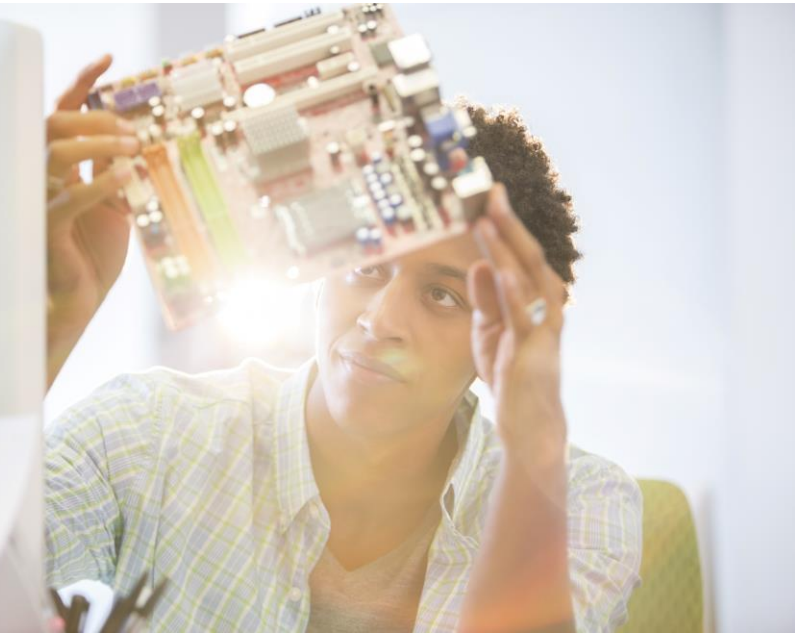
Budget	£127,878.14
Max capital element per grant	£20,000 or up to 50% of total costs whichever is smaller
Grant rate	25% maximum

We will not fund any grants that are 100% capital.

Capital expenditure must be claimed within 12 weeks of the date of the Grant Offer Letter.

Eligible activities – Go-Create Grants

- Capital or Revenue costs
 - Investment in product and service development
 - Technological and applied research
 - Developing pilot lines
- Early product validation actions
- First production



How does it work?

Go-Create grants

- Grant Offer
 - Total eligible spend £40,000 (revenue or capital and revenue)
 - Maximum grant offered £10,000
 - Grant rate 25% of total eligible spend
- Scenario 1
 - Total eligible spend £30,000
 - Maximum grant we can pay is £7,500 ($£30,000 \times 25\%$)
- Scenario 2
 - Total eligible spend £50,000
 - Maximum grant we can pay is £10,000 (the maximum grant offered)

How does it work?

Go-Create grants capital/revenue splits

- Total Spend £40,000 – eligible budgets
 - Total eligible spend £40,000 can be 100% revenue
 - Total eligible spend £40,000 can be up to 50% capital (i.e. £20,000 revenue; £20,000 capital)
- Scenario 1
 - Total eligible spend £30,000 (maximum capital £15,000)
 - Maximum grant we can pay is £7,500 (£30,000 x 25%)
- Scenario 2
 - Total eligible spend £50,000 (maximum capital £20,000)
 - Maximum grant we can pay is £10,000 (the maximum grant offered)
- Total Spend £40,000 – ineligible budgets
 - Total spend £40,000 of which 100% is capital
 - Total eligible spend £40,000 of which more than 50% is capital (i.e. £19,999 revenue; £20,001 capital)

More information

- Watch again
- Watch the generic overview presentation
- Slides and guidance notes are on the OxLEP website
- FAQs - Q&As will be published
- Email questions to: business@oxfordshirelep.com



European Union

European Regional
Development Fund



Questions



European Union

European Regional
Development Fund



**James Ruel
Compliance Manager**

james.ruel@oxfordshire.gov.uk

