

Go-Create Grants Application Details

11th September 2020

James Ruel, Compliance Manager



Agenda

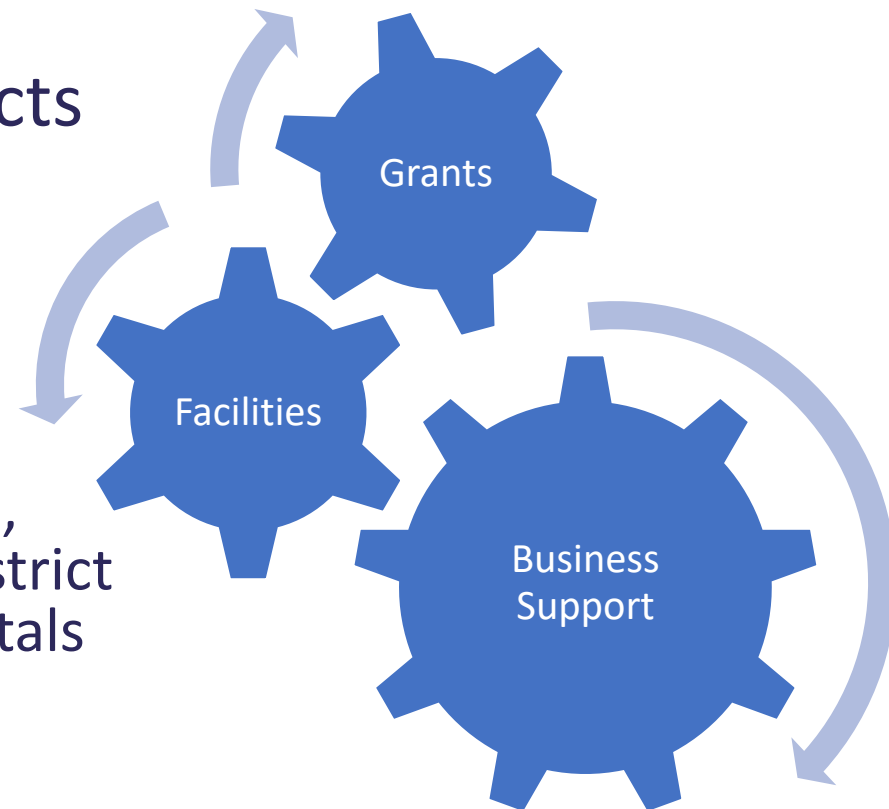


- Overview of ISfB
- What grant support is available
- Eligible activities
- How Go-Create grants work
- Q&A: business@oxfordshirelep.com

Innovation Support for Businesses

- Innovation facilities
 - Eco-business Centre
 - Agile & Labs
- Innovation support products
- Go-Create Grants

- Partners:
 - OCC, OxLEP, University of Oxford, Oxford City Council, Cherwell District Council, Oxford University Hospitals Trust





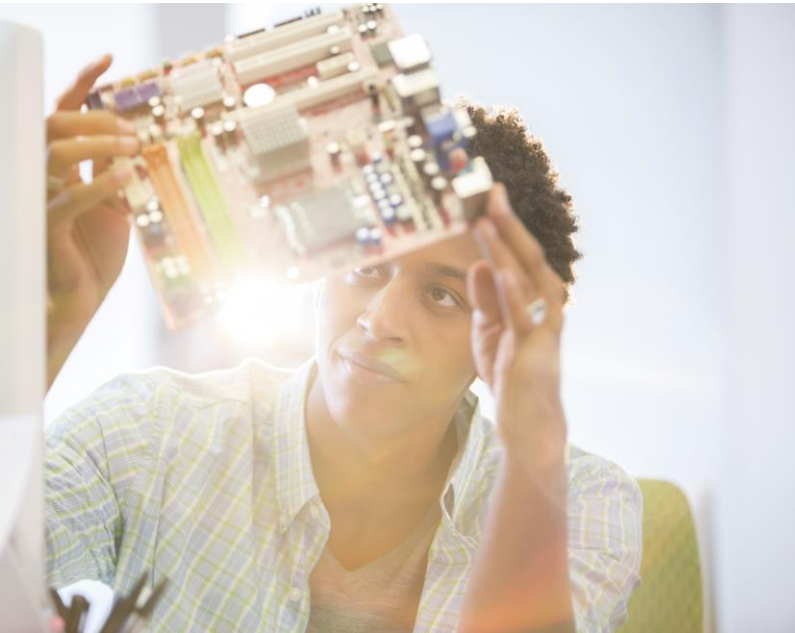
Go-Create revenue grants

| | |
|-------------|-----------------------|
| | |
| Budget | £875,000.00 |
| Committed | £599,914.57 |
| Uncommitted | £275,085.43 |
| Max grant | £50,000 (anticipated) |
| Grant rate | 25% maximum |

Since July 2018 we have committed approx. 2/3 of the available budget.

Eligible activities – Go-Create Grants

- Revenue, i.e. no asset over £5k
 - Investment in product and service development
 - Technological and applied research
 - Developing pilot lines
- Early product validation actions
- First production



Eligibility – Innovation Project

- SME
- Innovation
 - Product
 - Process
 - Service
- Ineligible sectors
 - the primary production of agricultural goods and fisheries/aquaculture;
 - road freight;
 - services of general economic interest;
 - export related activities; and
 - activities favouring domestic over imported goods.



How does it work?

Go-Create grants

- Grant Offer
 - Total eligible spend £40,000
 - Maximum grant offered £10,000
 - Grant rate 25% of total eligible spend
- Scenario 1
 - Total eligible spend £30,000
 - Maximum grant we can pay is £7,500 ($£30,000 \times 25\%$)
- Scenario 2
 - Total eligible spend £50,000
 - Maximum grant we can pay is £10,000 (the maximum grant offered)

More information

- Watch again
- Watch the generic overview presentation
- Slides and guidance notes are on the OxLEP website
- FAQs - Q&As will be published
- Email questions to: business@oxfordshirelep.com

James Ruel
Compliance Manager

james.ruel@oxfordshire.gov.uk

