

# Your Fabulous Future in Oxfordshire

*In association with VotesforSchools and The WOW Show*



THE CAREERS &  
ENTERPRISE  
COMPANY

# Learning objectives for today

- To be aware of what job and labour market information (LMI) is and what it can do for you.
- To recognise the qualities and skills needed for employability and provide evidence for those you have demonstrated both in and out of school.

## Keywords

- **LMI: Labour Market Information (LMI):** Information about the jobs and careers available in a geographical area.
- **Sector:** The areas into which the economic activity of a country is divided.
- **Employability:** Having the skills and abilities needed to have a job or career.

# 1 What is Labour Market Information (LMI)?

Discuss (2 mins)  
Where are you in  
Oxfordshire?



Discuss (2 mins)  
What are you near to?  
Schools? Airports?  
Workplaces?



If you are **aware of what is available in your local area** it can help you **decide** what you could do **when you leave school.**



# 1 What is Labour Market Information (LMI)?

Labour Market Information can help people make informed choices about which jobs and industry sectors are available in their area.



**Discuss (2 mins)**  
Have you thought about what you would like to do for your job in the future?



**Define: Labour Market Information (LMI)**  
Information about the jobs and careers available.

## 2

# What is the LMI in Oxfordshire?

### Class discussion (2 mins)

What jobs have you heard of in your area?

Click to find out more about which sectors have roles on offer in Oxfordshire.



Charity Sector



Warehouse Work

The NHS



Construction



Education



Gaming

Challenge:

Did you know anyone who works in any of these areas?

## 2

# What is the LMI in Oxfordshire?

### Class discussion (2 mins)

Have you spoken to anyone about what you want to do when you leave school?.



Buses and  
Trains



Retail/Shops



Oxfordshire  
Council



Care



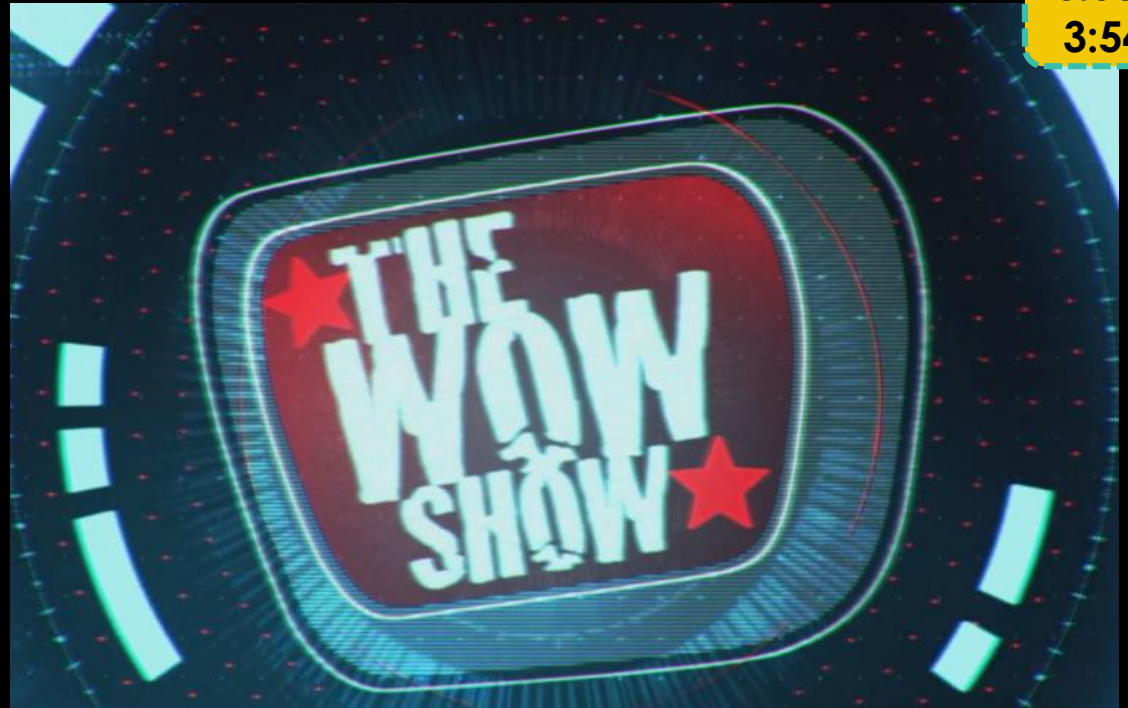
Film

### 3 A fabulous future in Oxfordshire?

There are lots of possibilities across Oxfordshire, watch **The WOW Show** film to see some of the great places people go to work.

#### Whole class activity (5 -8 mins)

Discuss the exciting opportunities available in Oxfordshire for you.



0:00-  
3:54



# 4 What skills do you need?

Class activity (2-3 mins)

When you begin to look for a job or your next steps after school, what skills do you think are important?

Click if you need a few hints!



Friendly



Problem-solving



Doing your best



Positivity



Good communication



Teamwork



Organisation





# 4 What skills do you need?

Reflection (4-5 mins)  
What are your skills?  
What are you really good at?



Friendly



Problem-solving



Doing your best



Positivity



Good communication



Teamwork

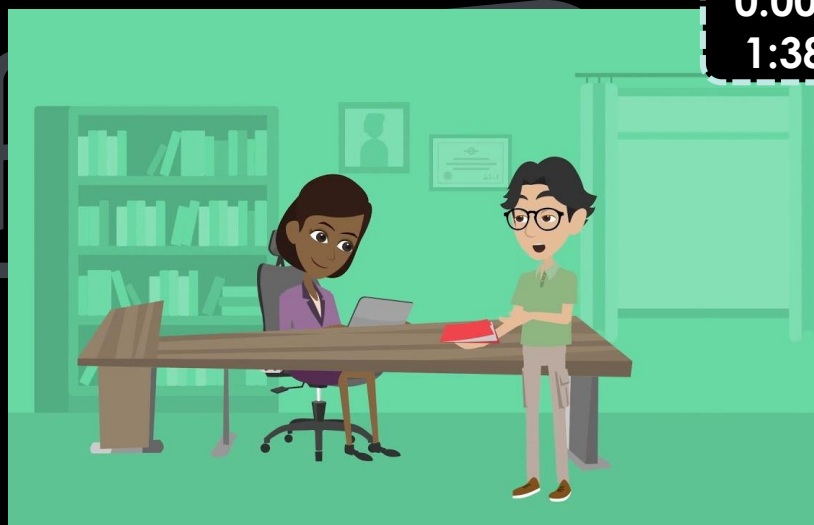


Organisation



# 5 How employable are you?

0:00-  
1:38



## Discuss (2 mins)

Before you watch the video, discuss which of the skills you've looked at today you think you have. Do you think this makes you a good candidate for a job?

## Class activity (2 mins)

Come up with a list of positive things about you. You can help others by telling them what you think is a great skill that they have.

The following slides contain information for staff on employers in Oxfordshire and those featured in The WOW Show film.



# Get to know the employers!

## Want to find out more?

Click on the logos to visit the websites of each employer featured below!



**The University of Oxford** has a huge variety of roles, don't just think teaching! They also have a great apprenticeship scheme.

**Diamond Light Source** is one of the most advanced scientific facilities in the world, and its pioneering capabilities are helping to keep the UK at the forefront of scientific research!



**The Culham Centre for Fusion Energy** is the UK's national nuclear fusion laboratory. They are researching generating low-carbon electricity.

**Unipart Group** brings together manufacturing, logistics and consultancy to create imaginative solutions for customers.



**Morgan Sindall** has a graduate programme and traineeships and apprenticeships so there are many routes into all areas of modern construction.

# Get to know the employers!

## Want to find out more?

Click on the logos to visit the websites of each employer featured below!



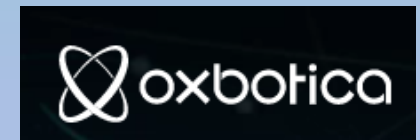
**Harwell** is one of the leading science and innovation campuses in Europe with over 200 organisations on the 900 hectare site (that's pretty huge...).

**Oxford NHS Hospitals** provide physical and mental health services and social care. They have over 6,000 employees!



**Rebellion** is known for producing books, comics, TV and film, but at its core it is a leading developer and publisher of games, such as Sniper Elite 4.

**Oxbotica** is one of the world's leading autonomous driving software companies. They build software for use in the real world, using ideas from the areas of physics, robotics, maths and artificial intelligence.

The Williams Racing logo features the words "WILLIAMS RACING" in white and blue capital letters on a white background.

**Williams Racing** employs around 600 people in the heart of the UK's "Motorsport Valley" in rural Oxfordshire.

# Get to know the employers!

## Want to find out more?

Click on the logos to visit the websites of each employer featured below!

**Greencore Construction** helps people build modern, dream homes with low impact on the environment.



**Blenheim Palace** is a big source of tourism in Oxfordshire, and it also hosts sporting events, banquets and weddings.

**Oxford University Press** create high quality academic and education resources. You may even have some of their textbooks!



Over 8,000 people work for **Thames Valley Police** with many varied roles and volunteering opportunities available.

**BMW Mini** run apprenticeships and internships, as well as taking graduates. They have a programme called “Girls Go Technical” to encourage young women to join.

